



CHEMSTONE®

KNOW YOUR STONE BETTER WITH US

The Dependable

Stone Experts



KNOW YOUR
STONE
BETTER WITH US

www.chemstone.in

CHEMSTONE®

KNOW YOUR STONE BETTER WITH US

COMMITTED TO
PROVIDING SAFE
AND INNOVATIVE
SOLUTIONS
SINCE 1982

As the leading manufacturer of high-quality chemicals for the treatment of natural **stone, tiles, marble, and granite**, our commitment to innovation sets us apart in both residential and commercial construction projects. Our pioneering spirit has led to the creation of a globally recognized alternative to conventional stone chemicals, celebrated for its exceptional quality. Operating under the **CHEMSTONE** banner, our extensive product range encompasses cutting-edge solutions such as **GROUTS, FILLERS, ADHESIVES, SHINERS, SEALERS, and CLEANERS**. Backed by our primary plant in Gujarat's Kheda district, manned by skilled technocrats ensuring top-notch quality, we offer expert assistance for flawless **commencement, installation, polishing, sealing, and cleaning**. With an unwavering dedication to solving traditional challenges through extensive research and development, we present a comprehensive solution for all your construction needs.



50+ PRODUCT RANGE

The speed at which the chemical market develops requires an effective response from the product and solution providers. Our basic focus is to anticipate problems in conventional methods of working in construction industry and stone industry and be ready with solutions. First and foremost, our commitment is to provide our users with innovative and safe solutions in this high-speed market.

Every new product launched by Chemstone is backed by strenuous research and experiments by our team. The physical and chemical properties of all the products manufactured by Chemstone are fully tested on state-of-the-art equipment. They are tested against extreme fluctuations in temperature, humidity and in required national & International codes other performance influencing factors before creating the final formulations. We ensure that the products used by our end users exceed their expectations, thus concluding the long journey of research and analysis at various stages since commencement. Innovation, sustainability, research and development are at the core and heart of the Chemstone family of manufactured products.

BE
VOCAL
FOR
LOCAL

Chemstone offers the best import substitutes for natural stone treatment and other construction chemicals and conducts all manufacturing operations in India. We support the Make in India campaign as it fosters innovation, enhances skill development and builds best in class infrastructure in our country.

We proudly welcome you to be a part of our efforts and be vocal for local.



www.chemstone.in

CONTENTS



**ADHESIVE
SYSTEMS**

01

06



WHITE SERIES

02

10



**POLYESTER
SYSTEMS**

03

12



EPOXY SYSTEMS

04

14



DENSIFYING SYSTEMS

05

16



POLISHING SYSTEMS

06

18



PROTECTION SYSTEMS

07

20



MAINTENANCE SYSTEMS

08

24



POXY GROUTS

09

26

BOND WITH THE BEST

Chemstone offers a range of efficient and high-performance adhesives for fixing and cladding of natural stones and tiles. CS Adhesives provide a significant advantage over conventional methods of sand-cement beds in terms of adhesion, strength, flexibility and durability.

ADHESIVE SYSTEMS



For Internal & External Floor & Wall



Superior Bond Strength



Highly Flexible



Impact Resistant



Low VOC

CS FLEX

CS FLEX is cementitious mineral adhesive for fixing ceramic tiles of small sizes for both indoor and outdoor areas. CS Flex is also recommended as a versatile block adhesive.

Performance Conformity
EN 12004:2017 - C1 T
IS 15477:2019 Type 2 Adhesive



Size	Grey Art No.	White Art No.
20 Kg	12101	12102
40 Kg	12201	12202

CS FLEX T

CS FLEX T is a single component, polymer modified cementitious adhesive with long open time, no sag, and high adhesion. It is specially designed for installation of large format tiles and natural stones.

Performance Conformity
EN 12004:2017 - C2 T E
IS 15477:2019 Type 2 Adhesive



Size	Grey Art No.	White Art No.
20 Kg	12103	12104
40 Kg	12203	12204

CS FLEX S1

CS FLEX S1 is a flexible, single component, polymer modified cementitious adhesive with long open time, no sag, and high adhesion. It is specially designed for installation of tiles and natural stones of all formats. It is specially recommended for laying and fixing at high elevations.

Performance Conformity
EN 12004:2017 - C2 T E S1
IS 15477:2019 Type 3 Adhesive



Size	Grey Art No.	White Art No.
20 Kg	12105	12106

CS FLEX W

CS FLEX W is a two-component, high performance, polymer-modified cementitious adhesive specially designed for laying and fixing of white and light coloured natural stones.

Performance Conformity
EN 12004:2017 - C2 T E S1
IS 15477:2019 Type 3 Adhesive



Size	Art No.
20 Kg	12107
6.25 Kg	12108

CS FLEX T GEL

CS FLEX T GEL is a single component, polymer modified cementitious adhesive with long open time, no sag, and high adhesion. It is specially designed for installation of large format tiles and natural stones.

Performance Conformity
EN 12004:2017 - C2 T E
IS 15477:2019 Type 2 Adhesive



Advance Benefits

- ✓ Gel Technology
- ✓ Gel Consistency
- ✓ Better Wettability
- ✓ Superior Adhesion

Size	Grey Art No.	White Art No.
20 Kg	12109	12110

CS FLEX S1 GEL

CS FLEX S1 GEL is a flexible, single component, polymer modified cementitious adhesive with long open time, no sag, and high adhesion. It is specially designed for installation of tiles and natural stones of all formats. It is specially recommended for laying and fixing at high elevations.

Performance Conformity
EN 12004:2017 - C2 T E S1
IS 15477:2019 Type 3 Adhesive



Advance Benefits

- ✓ Gel Technology
- ✓ Gel Consistency
- ✓ Better Wettability
- ✓ Superior Adhesion

Size	Grey Art No.	White Art No.
20 Kg	12111	12112

CS LATEX ECO

CS LATEX ECO is used for modifying mineral adhesives to improve flexibility and longitudinal and transverse deform ability. Recommended for substrates subject to extreme deformation. Can be used with all CS Flex products.



Size	Art No.
20 Kg	93050

CS ACRYBOND

CS ACRYBOND is a water – based acrylic polymer emulsion designed for modifying concrete / Portland cement compositions and waterproofing slurry.



Size	Art No.
20 Kg	93153
5 Kg	93152
1 Kg	93151

CS ANCHORFIX

CS ANCHORFIX is a resinous adhesive used for fixing water-sensitive tiles and natural stones. It provides high mechanical strength and highly rigid adhesion on versatile substrates.

Performance Conformity
EN 12004:2017 – R2 T
IS 15477:2019 Type 5 Adhesive



Size	Art No.
1.5 Kg Set	12515

CS EPOFLEX

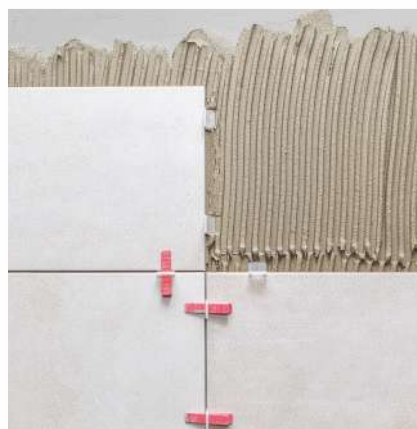
CS EPOFLEX is a resinous adhesive used for fixing water-sensitive tiles and natural stones on deformable substrates. It provides highly flexible and high – strength adhesion on versatile substrates.

Performance Conformity
EN 12004:2017 – R2 T
IS 15477:2019 Type 5 Adhesive



Size	Art No.
10 Kg Set	12512
4 Kg Set	12510





We understand your

LOVE FOR WHITE

Chemstone has developed a sophisticated range of Joint and surface fillers which are specially designed for white stones

WHITE SERIES



For Internal
& External
Floor & Wall



High UV
Resistance



Color
Stable



Low VOC

CHEMPOX 9090 CRYSTAL CLEAR

CS CHEMPOX 9090 CRYSTAL CLEAR is a two-component, epoxy-based and solvent free gel. It is formulated using specialized materials that provide excellent UV resistance. It is specially designed for joint filling in natural in white and light-colored stones.

Size	R. Art No.	H. Art No.
2.25 Kg Set	90644	90544
1.5 Kg Set	90645	90545
1 Kg Set	90646	90546



CS CHEMPOX 9090 L SURFACE FILLER

CS CHEMPOX 9090 L SURFACE FILLER is a two-component, epoxy-based and solvent free resin liquid. It is formulated using specialized materials that provide excellent UV resistance and color stability. It is specially designed for surface filling of natural cracks and fissures in white and light-colored stones.



Size	R. Art No.	H. Art No.
5 Kg Set	90652	90552
1.25 Kg Set	90653	90553

CS CHEMPOX 9090 L JOINT FILLER

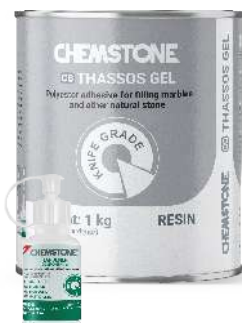
CS CHEMPOX 9090 L JOINT FILLER is a two-component, epoxy-based and solvent free resin liquid. It is formulated using specialized materials that provide excellent UV resistance and color stability. It is specially designed for joint filling in natural in white and light-colored stones.



Size	R. Art No.	H. Art No.
5 Kg Set	90650	90550
1.25 Kg Set	90651	90551

CS THASSOS GEL

CS THASSOS GEL is a two-component, knife-grade, polyester-based gel for joint filling of marble and natural stones. It is highly recommended for white marbles and other light-colored stones. It is specially formulated to cause minimal to no bleeding in joints.



Size	R. Art No.	H. Art No.
1 Kg Set	90722	90816

CS THASSOS LIQUID

CS THASSOS LIQUID is a two-component, polyester-based mastic liquid for surface and joint filling of marble and natural stones. It is highly recommended for white marbles and other light-colored stones. It is specially formulated to cause minimal to no bleeding in joints. Liquid consistency allows for efficient filling of large surfaces.



Size	R. Art No.	H. Art No.
1 Kg Set	90323	90816



POLYESTER SYSTEMS



For Internal
& External
Floor & Wall



UV
Resistant



Color
Stable



Low VOC

CS MASTIC SOFT

CS MASTIC SOFT is a two-component, UV stabilized, knife grade, polyester-based resin joint filler. It can be used for colored marble and other natural stones. It is available in different colors to provide a picture-perfect floor finish.

Size	R. Art No.	H. Art No.
1.5 Kg Set	93048	90817



CS MASTIC LIQUID

CS MASTIC LIQUID is a two component, UV stabilized, polyester-based, resin stone surface filler. It can be used for colored marble and other natural stones. It provides great adhesion and is highly polishable. It is available in different colors to provide a picture-perfect floor finish.

Size	R. Art No.	H. Art No.
1 Kg Set	93049	90817



CS TRANSPARENT SOFT

CS TRANSPARENT SOFT is a two-component, UV-stabilized, knife grade polyester-based resin gel. It is widely used for filling and bonding natural stones. It provides great adhesion and is highly polishable. Coloring is possible with CS Tint.

Size	R. Art No.	H. Art No.
1 Kg Set	90952	90817



CS TRANSPARENT LIQUID

CS TRANSPARENT LIQUID is a two-component, UV-stabilized polyester-based resin liquid. It is widely used for surface and joint filling of natural and artificial stones. Due to its flowing consistency, it is convenient for large area applications. Coloring is possible with CS Tint.

Size	R. Art No.	H. Art No.
1 Kg Set	90958	90817



CS WATER CLEAR GEL SPECIAL

CS WATER CLEAR GEL SPECIAL gel is a color neutral, polyester based, knife grade, resin stone surface and joint filler. It can be used for marble and other natural stones. It provides great adhesion and is highly polishable. Coloring is possible with CS Tint.

Size	R. Art No.	H. Art No.
1 Kg Set	90258	90816



CS CRACK FILL WATER CLEAR

CS CRACK FILL WATER CLEAR is a color neutral, polyester-based resin liquid stone surface and joint filler. It is used for surface filling of marble and other natural. It is highly polishable and coloring is possible with CS Tint.

Size	R. Art No.	H. Art No.
1 Kg Set	90721	90816



CS TINT

CS TINT are paste-like concentrates of specially formulated pigments for coloration of epoxy and polyester products. CS Tint is available in standard RAL colors and customized coloration to match stones or tiles is also available.

Size	P. Art No.	E. Art No.
50 Gm	91601	91701





EPOXY SYSTEMS



For Internal
& External
Floor & Wall



UV
Resistant



Color
Stable



Low VOC



Food Safe

CS CHEMPOX 5025

CS CHEMPOX 5025 CLEAR BOND is an epoxy-based, solvent-free, color-stable, two-component adhesive gel for natural and artificial colored stones.

Size	R. Art No.	H. Art No.
2.25 Kg Set	90647	90547
1.5 Kg Set	90648	90548
1 Kg Set	90649	90549



CS COMPOGEL

CS COMPOGEL is a flexible, epoxy-based, two-component adhesive gel specially designed for joint filling in composite stones and other stones that are subjected to high amount of thermal expansion and contraction.

Size	R. Art No.	H. Art No.
2.25 Kg Set	90634	90534
1.5 Kg Set	90635	90535
1 Kg Set	90636	90536



CS CHEMPOX 5020

CS CHEMPOX 5020 is a color neutral, two-component epoxy-based resin gel with modified amine hardener which causes minimal yellowing. It is widely used in the stone industry to fill joints of natural and artificial stones. Coloring possible with CS Tint.

Features: Thixotropic, high creep strength, weather resistant, color neutral

Size	R. Art No.	H. Art No.
1.25 Kg Set	90625	90525



CS POXY GEL

CS POXY GEL is a color neutral, epoxy-based, solvent-free, two-component adhesive gel for natural and artificial stones. It uses a specially formulated amine hardener which causes minimal yellowing. Coloring possible with CS Tint.

Features: Thixotropic, high creep strength, weather resistant, color neutral

Size	R. Art No.	H. Art No.
2.25 Kg Set	90637	90537
1 Kg Set	90638	90538



CS CHEMPOX 5050

CS CHEMPOX 5050 is a color neutral, two-component epoxy-based resin gel with modified amine hardener which causes minimal yellowing. It is widely used in the stone industry to fill joints of natural and artificial stones. Coloring possible with CS Tint.

Size	R. Art No.	H. Art No.
2 Kg Set	90001	90101
1 Kg Set	90002	90102



CS CHEMPOX 9005

CS CHEMPOX 9005 is a low-viscosity, two-component epoxy resin system with modified amine hardener, used for firmly filling cracks and large pores.

Features: Fluid, high degree of penetration, color neutral

Size	R. Art No.	H. Art No.
5 Kg Set	90642	90542
1.25 Kg Set	90641	90541



CS CHEMPOX MICRO 9016

CS CHEMPOX MICRO FILLER - 9016 is an ultra low-viscosity, two-component epoxy resin system with modified amine hardener, used for firmly filling cracks and large pores.

Features: Ultra-low viscosity fluid, very high degree of penetration, color neutral

Size	R. Art No.	H. Art No.
5 Kg Set	91711	91611
1.25 Kg Set	91710	91610



CS CHEMPOX 9045

CS CHEMPOX 9045 is a low-viscosity, two-component epoxy resin system with modified amine hardener, used for firmly filling cracks and large pores.

Size	R. Art No.	H. Art No.
3 Kg Set	90643	90543





DENSIFYING SYSTEMS



For Internal & External Floor & Wall



Increased Acid & Stain Resistance



Increased Gloss



Increased water Resistance

ABRASION RESISTANCE

- Increased hardness increases abrasion resistance of the stone
- This also enhances the gloss of the stone
- Gloss is retained for longer time
- Strengthened stone minimizes issues like crack and bug hole development
- Treated stone exhibits resistance against stone solution
- The newly formed material fills porosity and cracks and sealing properties are greatly improved. This gives high level of stain repellency.

ADVANTAGES

- Increased hardness
- Increased abrasion / Scratch resistance
- Enhanced gloss of surface
- Longer retention of gloss
- Increased strength minimizes chances of cracks and bug hole development
- Resistance to saltwater
- Improved stain-repellency

CS GUARD

CS GUARD is specially designed water-based, densifier for application on stone and concrete surfaces to make them stronger, harder and denser. The product can be used both indoor and outdoor to increase strength of natural stone and concrete.



Size	Art No.
20 Ltr	91357
5 Ltr	91356
1 Ltr	91355

CS GUARD PLUS

CS GUARD Plus is specially designed water-based, densifier for application on stone and concrete surfaces to make them stronger, harder and denser. The product can be used both indoor and outdoor to increase strength of natural stone and concrete.



Size	Art No.
20 Ltr	91360
5 Ltr	91359
1 Ltr	91358

CS GUARD PLATINUM

CS GUARD PLATINUM is specially designed water-based, densifier for application on stone and concrete surfaces to make them stronger, harder and denser. The product can be used both indoor and outdoor to increase strength of natural stone and concrete.



Size	Art No.
20 Ltr	91363
5 Ltr	91362
1 Ltr	91361



POLISHING SYSTEMS

IT IS NOT JUST A FINISH,
IT IS ADDED STRENGTH



For Internal
& External
Floor & Wall



Increased
Acid & Stain
Resistance



Increased
Gloss



Increased
water
Resistance

CS INSTASHINE POWDER

CS INSTASHINE POWDER is a polisher that helps re-polish worn out stone. The polishing powder can provide mirror - finish polish with minimum equipment and helps restore the original shine of the stone.



Size	Art No.
5 Kg	93821
1 Kg	93820

CS INSTASHINE LIQUID

CS INSTASHINE LIQUID is a ready-to-use polishing and restoration cream for calcareous stones. CS Instashine Liquid provides the stone with a factory-finish polish with minimum equipment. It can remove minor scratches and stains and also provide a high degree of polish.



Size	Art No.
1 Kg	93122

CS INSTASHINE ULTRA

CS INSTASHINE ULTRA is a ready-to-use vitrification and restoration system for calcareous stone floorings. The polishing system produces a very high polish and makes the stone resistant to scuffs and scratches. CS Instashine Ultra dries up after buffing which requires no messy clean up.



Size	Art No.
1 Ltr	93121



PROTECTION SYSTEMS



For Internal
& External
Floor & Wall



Water
Resistance



Oil & Stain
Resistance



Longlasting

STEP ONE

CS STEP ONE is a solvent based stone installation treatment, specially formulated to help prevent grout, cement and general dirt residue stains during installation works, before final anti stain protection. Product will not change the natural aspect of the stone or create any type of film, allowing permeability vapour moisture to escape and is UV resistant

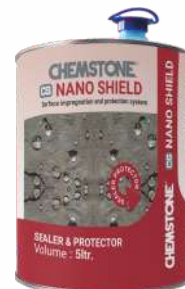
Size	Art No.
5 Ltr	91938
1 Ltr	91937



CS NANO SHIELD

CS NANO SHIELD is a ready-to-use high performance solvent-based stone impregnator that provides a durable, subsurface, protective barrier against oil and liquid on stone, tile and grout surfaces. It is specially designed for low-porosity stone, unglazed tile, grout, terracotta. It provides oil and water repellency, stain resistance and easy clean up.

Size	Art No.
5 Ltr	90835
1 Ltr	90834



CS BARRIER

CS BARRIER is a ready-to-use solvent-based, non-film forming, fluoro-acrylic sealer that provides a durable, subsurface, transparent, protective barrier which provides oil and stain repellency on low porosity mineral substrates like natural stones.

Size	Art No.
5 Ltr	91933
1 Ltr	91932



CS BARRIER W

CS BARRIER W is a ready-to-use water-based, non-film forming, stone impregnator that provides a durable, subsurface, transparent protective barrier which provides oil and stain repellency on low porosity mineral substrates like natural stones.

Size	Art No.
5 Ltr	91931
1 Ltr	91929



CS STONE IMPREGNATION

CS STONE IMPREGNATION is a solvent-based, non-film-forming, penetrating fluoro-acrylic sealer that provides a subsurface, transparent, protection against water on porous mineral surfaces.

Size	Art No.
5 Ltr	93933
1 Ltr	93932



CS SEAL W

CS SEAL W is a non-film forming, water-based penetrating sealer that provides water repellency to porous mineral substrates. It is formulated to provide a high level of sealing but still allowing the stone/surface to breathe which prevents any moisture related degradation.

Size	Art No.
20 Ltr	93299
5 Ltr	93298
1 Ltr	93297



CS SEAL 33

CS SEAL 33 is a ready-to-use, non-film forming, water-based mixture of silanes and siloxanes. It is a high-quality general-purpose water repellency and impregnation system for porous mineral and alkaline substrates.

Size	Art No.
20 Ltr	90808
5 Ltr	90807
1 Ltr	90806



CS DARKENER BARRIER PLUS

CS DARKENER BARRIER PLUS is a ready-to-use solvent-based stone impregnator. It is specially formulated with modified silanes to impregnate natural stones. It gives the surface an enhanced wet look. It also provides resistance to oil, water and stains.

Size	Art No.
5 Ltr	90940
1 Ltr	90941



CS GLOSSER

CS GLOSSER is a satin-finish, solvent-based stone sealer. It is formulated with super acrylic resins which intensify the color of the surface with a satin gloss. It can be used both indoors and outdoors on unpolished surfaces.



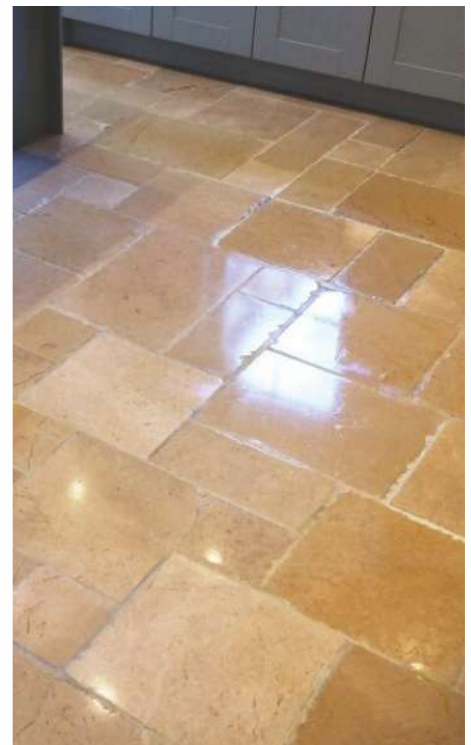
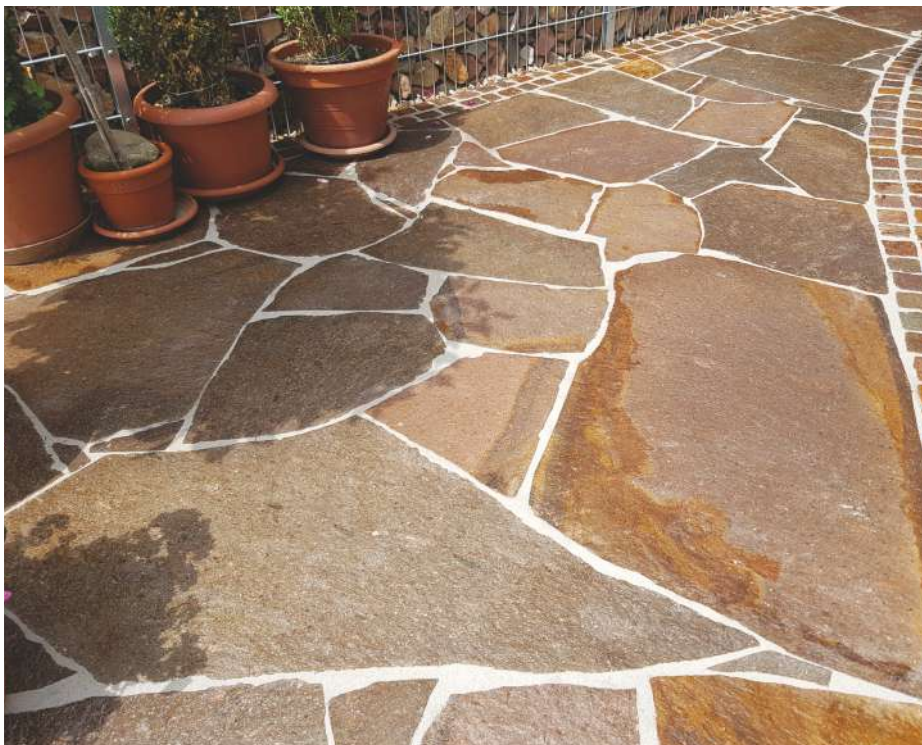
Size	Art No.
5 ltr	90839
1 ltr	90838

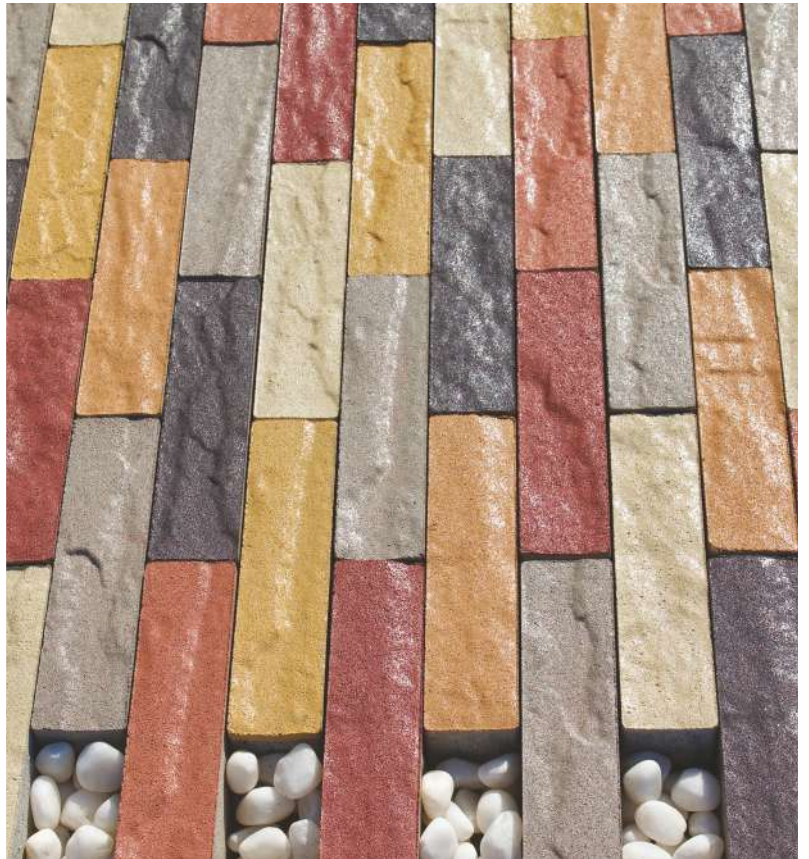
CS CERA FINISH

CS CERA FINISH is a liquid wax polishing liquid which is used to intensify and restore the polish look on natural and artificial stones. This is a quick drying product and requires no clean up. CS Cerafinish can also be used in automatic waxing machines. Can be used on dark colored marbles, granites and other similar materials. This material can also be used on rough stones for a matte finish look.



Size	Art No.
5 Ltr	90943
1 Ltr	90942







MAINTENANCE SYSTEMS



For Internal & External Floor & Wall



Fast Action



Easy to Clean

CS POXY REMOVER

CS POXY REMOVER is designed to open old joints and epoxy joint filler. It is also used to clean tools and adjacent surfaces after application of resin-based products.



Size	Art No.
400 MI	91983

HEAVY DUTY TILE CLEANER

HEAVY DUTY TILE CLEANER is used for interior and exterior ceramic tiled floors and walls.



Size	Art No.
1 Ltr	91986
500 MI	91985

CS RUST REMOVER MARBLE

CS RUST REMOVER Marble is a water-based, acid-free, ready-to-use cleaning agent for marble stones.



Size	Art No.
400 MI	90815

CS RUST REMOVER GRANITE

CS RUST REMOVER Granite is a water-based, slightly acidic, ready-to-use cleaning agent for granite.



Size	Art No.
400 MI	90814

CS ALGAE REMOVER

CS ALGAE REMOVER rapidly and thoroughly removes natural layers on fagades, roofs, walls and floors made of natural and artificial stone, e.g. marble, granite, concrete ashlar and similar.



Size	Art No.
400 MI	90832

CS MAGIC STAIN-OUT

CS MAGIC STAIN-OUT is a specially formulated, acid-free cleaning system for sensitive polished surfaces of natural stones. Ideal for deeply absorbed stains Organic stains caused by coffee, tea, fruit juice, red wine, cardboard, blossom, bird droppings, tobacco etc. can be excellently removed.



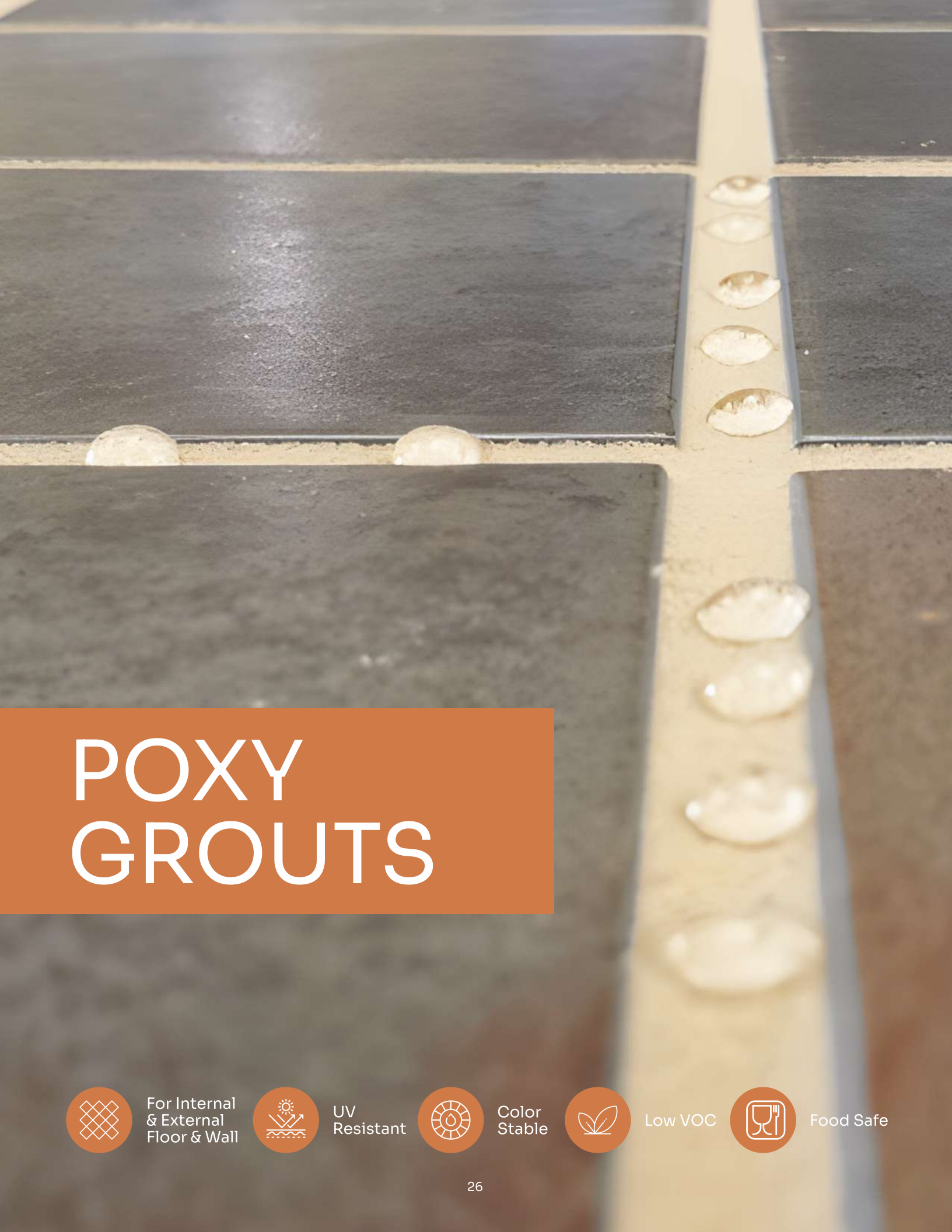
Size	Art No.
800 MI Set	13075

CS MAGIC DRY

CS MAGIC DRY is a two-component paste system for removing impregnated external stains on stone surfaces. It is highly effective on food and tobacco stains. The consistency of the paste can be adjusted for vertical applications.



Size	Art No.
400 MI Set	13077



POXY GROUTS



For Internal
& External
Floor & Wall



UV
Resistant



Color
Stable



Low VOC



Food Safe

CS POXY-GROUT

CS POXY-GROUT is a stain free, colour-fast, chemical resistant, 100% solid poxy grout for ceramic tile, vitrified tile, marble & stone.



Size	R. Art No.	F. Art No.
5 Kg Set	90637	91202
1 Kg Set	91101	91102

CS POXY-GROUT CLEAR

CS POXY-GROUT CLEAR is a stain free, colour-fast, chemical resistant, 100% solid poxy grout for ceramic tile, vitrified tile, marble & stone.



Size	Art No.
3 Kg Set	91104

STAINFREE GROUT FOR FLOOR N' WALL

PRODUCT DESCRIPTION:

CS POXY - GROUT is a stain free, colour-fast, chemical resistant, 100% solid epoxy grout for ceramic tile, vitrified tile, marble & stone.

APPLICATION:

CS POXY - GROUT is ideally for suited for residential & commercial installation where materials must resist physical abuse, shock and chemicals.

PART C FILLER POWDER

To be used in combination with PART A (Hardener) & Part B (Resin)

100 % Stain Free

Strong & Durable

Chemical & Temperature resistant

Food Safe



TILE CLEANING AFTER GROUTING

CS Poxo Remover

CS POXY REMOVER is designed to open old joints and epoxy joint filler. It is also used to clean tools and adjacent surfaces after application of resin-based products.

Heavy Duty Tile Cleaner

HEAVY DUTY TILE CLEANER is used for interior and exterior ceramic tiled floors and walls.

106 DEEP IVORY	46 EARTH RED
07 RUST RED	03 SLEEK
06 CHOCOLATE RED	85 ALMOND
04 BROWN	23 OFF WHITE
27 QUART BEIGE	18 WHITE WINE
25 GREEN	54 DUSTY PINK
05 BEIGE PINK	61 BEESWAX
11 ITA GOLD	51 TON BEIGE
15 BEIGE GREEN	35 DARK COFFEE
92 SOIL TEEK	34 CEMENT STONE
102 WATER BLUE	17 IVORY BEIGE
103 DEEP BLUE	22 DEEP BLACK
89 SOIL GREEN	101 OCEAN BLUE
126 AGRA RED	108 DEEP BLUE
127 BABY PINK	109 RED BROWN
129 HARD BLUE	110 PASTEL GREEN
78 BEIGE GREY	88 SILVER
42 PLETINUM GREY	91 MOSS GREY
128 FRUIT YELLOW	24 CEMENT GREY
44 MILKY WHITE	45 LIGHT BLACK

Manufactured & Marketed By:

CHEMSTONE[®]

Factory:

Jivrajpura Road, Vill. Wanthvali,
Mehmedabad, Kheda, Gujarat 387130, INDIA.

Admin Office:

Plot 4718/1, Phase IV, G.I.D.C., Vatva,
Ahmedabad, Gujarat-382445, INDIA.

Authorised Distributor / Dealer



E.: Info@chemstone.in | **Call:** +91 63549 16400